



## ATEX Reducer category 2 Riduttore ATEX categoria 2



CODE **AX121**

- Use of synthetic oil and with oil plugs (oil plugs when possible).
- VITON oil seals.
- Loctite on all external screws.
- Double input seals, when possible.
- Additional output oil seals when possible.
- Indication of maximum temperature gauge.
- Utilizzo di olio sintetico e con tappi olio (tappi olio dove è possibile).
- Anelli di tenuta in VITON.
- Frena filetti su tutte le viti fissaggio esterne.
- Doppio anello di tenuta in entrata, dove è possibile.
- Anelli di tenuta supplementare in uscita dove è possibile.
- Indicatore visivo di temperatura di massima.

### Advised / Sugerito



**Atex Cat. 2**

For more information see our guide «Atex installation and maintenance guide» on our website.

Per ulteriori informazioni, consultare la nostra guida «Atex guida alla manutenzione e installazione» sul nostro sito..

## ATEX Reducer category 3 Riduttore ATEX categoria 3

CODE **AX222**

- Use of synthetic oil and with oil plugs (oil plugs when possible).
- Utilizzo di soli olio sintetico e con tappi olio (tappi olio dove è possibile).

### Advised / Sugerito

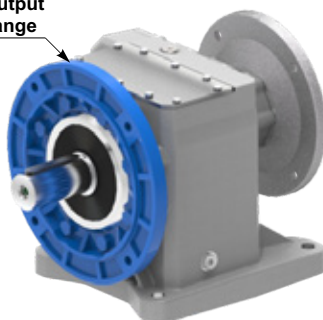


**Atex Cat. 3**

For more information see our guide «Atex installation and maintenance guide» on our website.

Per ulteriori informazioni, consultare la nostra guida «Atex guida alla manutenzione e installazione» sul nostro sito..

∅ output Flange



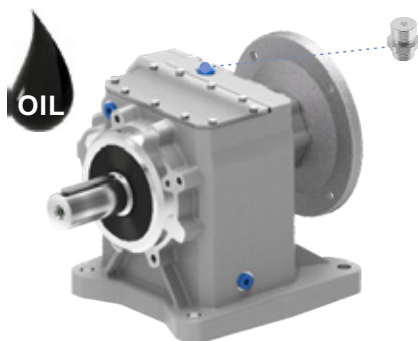
Mounting with feet and output flange  
Montaggio con piedini e flangia di uscita

	∅ output Flange	B4	B5	S6	S7	S8		∅ output Flange	S9	S0
712C	200	●		●			** 1002	300	●	
713C	250							1003	350	●
812C	250		●		●		** 1102	450	●	
813C	300							1103	350	
** 862C	300					●		450		●
863C	350					●				

● Available / Disponibile

\*\* Housing with integral feet S8 / Cassa con piede integrale S8

## Oil for low temperature and food Olio per basse temperature e alimenti



CODE **OB150**

**Agip Blasias 150**  
**Shell Omala**  
Oil for low temperature  
Olio per basse temperature

### Advised / Sugerito

**Low temperature.**

\* With pressure oil valve plug

**Basse temperature.**

\* con tappo olio con valvola



CODE **OF320**

**Mobil SHC Cibus 320**  
Oil for food/Olio per alimenti

**Oil for food.**

**Olio per alimenti.**

CODE **OS320**

**Shell Omala 320**  
Synthetic oil only available for 712/3C, 812/3C and 862/3C.  
Olio sintetico disponibile solo per 712/3C, 812/3C e 862/3C.

**All plugs closed, low internal pressure.**  
**Tappi chiusi, bassa pressione interna.**

## Output shaft Viton oil seals Anelli di tenuta uscita in Viton



CODE **ATVIU**

	Type
712C	45x85x10
713C	45x85x10
812C	45x85x10
813C	45x85x10
862C	60x85x8+
863C	OR+spacer
1002	85x130x12
1003	85x130x12
1102	90x140x13
1103	90x140x13

### Advised / Sugerito

**For ambient temperature >40°C**  
**Per temperatura ambiente >40°C**



# Coaxial - ACCESSORIES AND OPTIONS



Double input oil seal  
Doppio anello di tenuta in entrata

CODE **2ATEN**

Advised / Sugerito



**Ideal for V6 vertical position.**  
Ideale per posizione verticale V6.

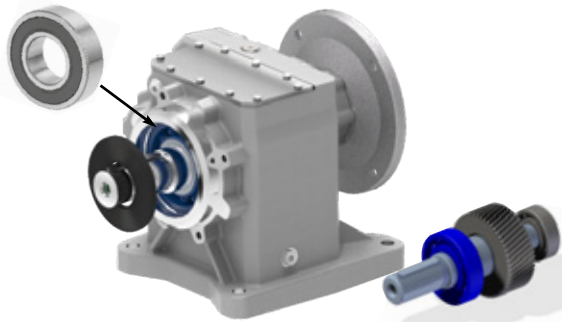


	712C 812C	713C 813C	862C	863C	1002	1003	1102	1103	
<b>IEC</b>	56 B5	—	—	—	—	—	—	—	
	63 B5	—	35x47x7	—	—	—	—	—	
	71 B5	—	35x47x7	—	45x62x7	—	—	—	
	80÷90 B5	45x62x7	35x47x7	—	45x62x7	—	—	—	
	100÷112 B5	Not available	Not available	—	Not available	—	—	—	
	132 B5	Not available	—	Not available	Not available	80x140x13	Not available	80x140x13	Not available
	160 B5	—	—	Not available	—	80x140x13	Not available	80x140x13	Not available
	180 B5	—	—	Not available	—	80x140x13	Not available	80x140x13	Not available
	200 B5	—	—	—	—	80x140x13	—	80x140x13	—
	225 B5	—	—	—	—	—	—	80x140x13	—
<b>NEMA</b>	56 B14	—	—	—	—	—	—	—	
	63 B14	—	—	—	—	—	—	—	
	71 B14	—	35x47x7	—	—	—	—	—	
	80 B14	Not available	35x47x7	Not available	Not available	—	—	—	
	90 B14	Not available	35x47x7	Not available	Not available	—	—	—	
	100÷112 B14	45x62x7	Not available	—	45x62x7	—	—	—	
	132 B14	Not available	—	—	Not available	—	—	—	
	56C	45x62x7	35x47x7	—	45x62x7	—	—	—	
	143/5TC	45x62x7	35x47x7	—	45x62x7	—	Not available	—	Not available
	182/4TC	45x62x7	—	Not available	45x62x7	—	Not available	—	Not available
213/5TC	Not available	—	Not available	Not available	—	Not available	—	Not available	
254/6TC	—	—	Not available	—	80x140x13	—	80x140x13	—	
213/5TC	—	—	—	—	80x140x13	—	80x140x13	—	

Life lubricated bearings  
Cuscinetti lubrificati a vita

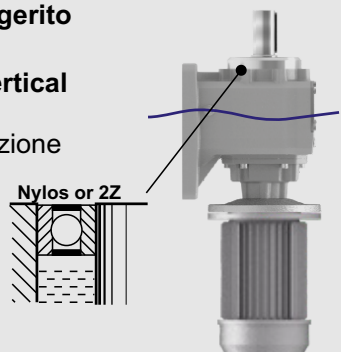
CODE **MONV6**

Advised / Sugerito



	Type
712C 713C	Av30209
812C 813C	Av30209
862C 863C	6312
1002 1003	AV32017 AV32307
1102 1103	AV32018 AV32308

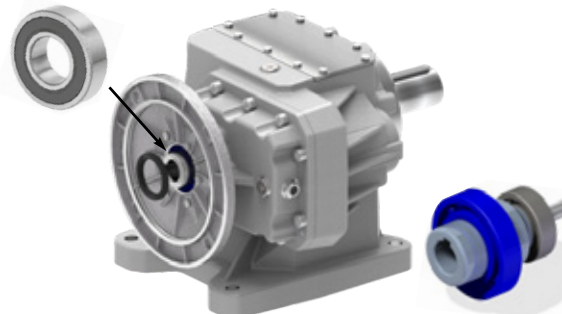
**Ideal for V6 vertical position.**  
Ideale per posizione verticale V6.



Life lubricated bearings  
Cuscinetti lubrificati a vita

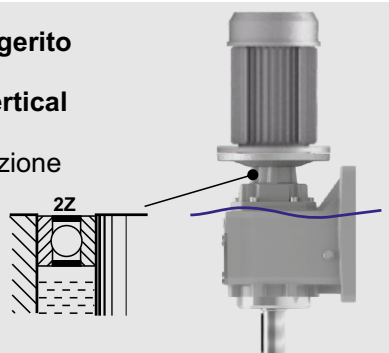
CODE **MONV5**

Advised / Sugerito



	Type
713C 813C	6007
712C 812C 862C 863C	6009
1003 1103	6013

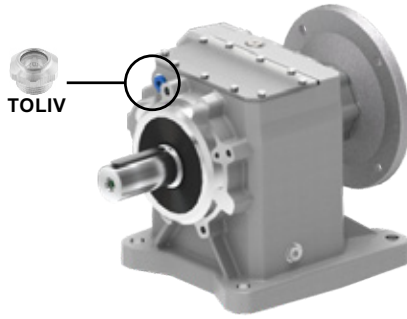
**Ideal for V5 vertical position.**  
Ideale per posizione verticale V5.



# Coaxial - ACCESSORIES AND OPTIONS



Housing with oil level plugs  
Cassa con tappo livello olio



CODE **TOLIV**

Advised / Sugerito

CODE	Type
712C 713C	1/4G

With level oil plug.  
Con tappo livello olio.

Input Viton oil seal  
Anello di tenuta Viton in entrata



CODE **ATVIE**

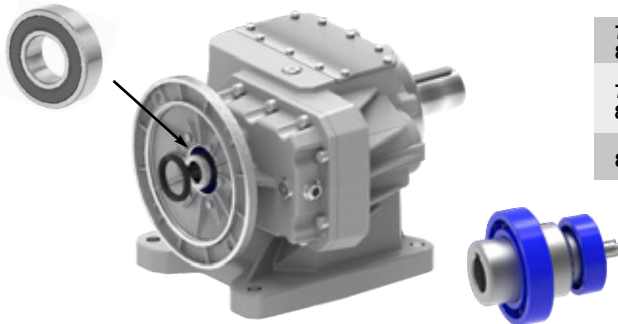
Advised / Sugerito

CODE	Type
712C 712C	45X62X8
813C 813C	30x47x7 35x47x7
863C	35x62x7 40x62x7

For ambient temperature >40°C  
Per temperatura ambiente >40°C



Life lubricated two bearings  
Due Cuscinetti lubrificati a vita



CODE **2CRS1**

Advised / Sugerito

CODE	Type
713C 813C	6004 6007
712C 812C	6207 6009
863C	6205 6009

NEMA input flange.  
Flangia entrata NEMA.



CODE **FLENU**

Advised / Sugerito

USA , CANDA, MEXICO.

	-W	-X	-Y	AA	AB
713C 813C	56C-0.625	143/5TC-0.875	—	—	—
862C	—	—	182/4TC-1.125	213/5TC-1.375	254/6TC-1.625
712C 812C 863C	—	143/5TC-0.875	182/4TC-1.125	213/5TC-1.375	—